

Beacon 3



Beacon 3



Beacon 3

Beacon 3 (HA-030W-B) connections

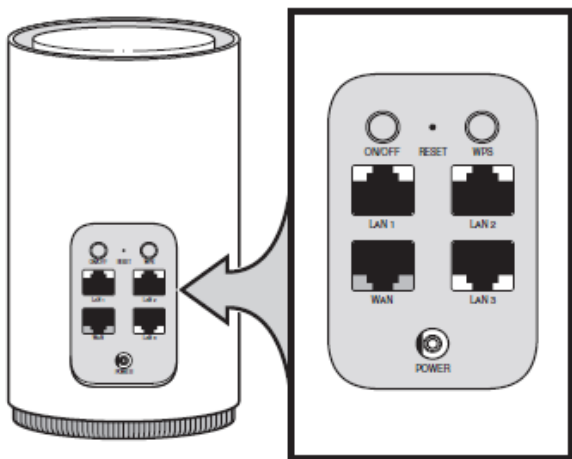


Table 8 Beacon 3 (HA-030W-B) physical connections

| Connection | Description |
|-------------------|---|
| On/Off button | This button powers the unit on or off. |
| LAN 1/LAN 2/LAN 3 | This connection is provided through Ethernet RJ-45 connectors. Up to three 10/100/1000 Base-T Ethernet interfaces are supported. The Ethernet ports can support both data and in-band video services on all three interfaces. |
| WAN port | This connection is provided through an RJ-45 Gigabit Ethernet interface. |
| WPS ON/Off button | This button is used to start the WiFi Protected Setup (WPS) for new WiFi devices. |
| Reset button | Pressing the Reset button for less than 10 seconds reboots the Beacon; pressing the Reset button for 10 seconds or more restores the Beacon to its factory defaults. |
| Power input | This connection is provided through the power connector. A power cable fitted with a barrel connector is used to make the connection. |

Beacon 3

Table 9 Beacon 3 (HA-030W-B) LED indications

| LED color | LED behavior | Router mode | Bridge mode | LED behavior description |
|------------|----------------|-------------|-------------|---|
| Off | Off | ✓ | ✓ | Power off. |
| Blue-Green | Solid | ✓ | | Good backhaul connection to the Internet. |
| | Solid | | ✓ | Good backhaul connection. A link to the next node is available. |
| Yellow | Solid | | ✓ | Backhaul connection is successful but not optimal. A link to the next node is below standard. |
| | Slow pulsing | ✓ | ✓ | Configuration mode. The unit is waiting to be configured. |
| Red | Solid | ✓ | | No connection to the Internet. |
| | Solid | | ✓ | Backhaul connection is not successful. A link to the next node is not operational. |
| | Fast pulsing | ✓ | ✓ | Factory reset |
| White | Slow pulsing | ✓ | ✓ | WPS enabled |
| | 3 quick pulses | ✓ | ✓ | WPS successful |
| | Solid | ✓ | ✓ | Powering on |

Table 10 Beacon 3 (HA-030W-B) physical specifications

| Description | Specification |
|--|------------------|
| Diameter | 94 mm (3.7 in.) |
| Height | 120 mm (6.3 in.) |
| Weight [within ± 0.5 lb (0.23 kg)] | 650g (1.43 lb) |

Table 11 Beacon 3 (HA-030W-B) power consumption specifications

| Maximum power (Not to exceed) | Condition | Minimum power | Condition |
|-------------------------------|---|---------------|-------------------------------------|
| 16.9 W | 3 10/100/1000 Base-T Ethernet, WiFi operational | 7.8 W | Interfaces/services not provisioned |

Table 12 lists the environmental specifications for Beacon 3 (HA-030W-B).

Table 12 Beacon 3 (HA-030W-B) environmental specifications

| Mounting method | Temperature range and humidity | Altitude |
|------------------|---|--|
| On desk or shelf | Operating: -5°C to 45°C (23°F to 113°F) ambient temperature 95% relative humidity, non-condensing at 40°C | Contact your Nokia technical support representative for more information |
| | Storage: -20°C to 85°C (-4°F to 185°F) | |